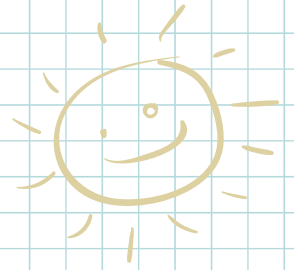


DON'T FORGET!!!

# Valentine's Day

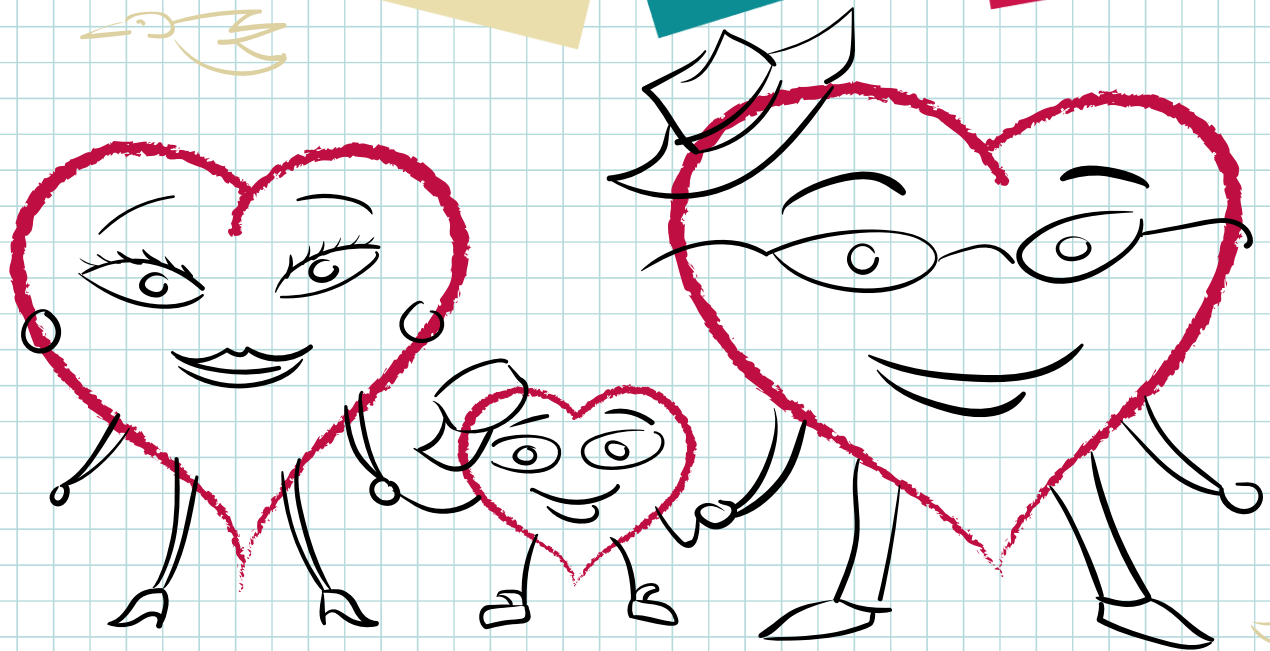


BACTERIA

METALS

SAMPLE

DROP OFF



14 FEB 12 P.M.

*At the Soil & Water Office*

Know your water is safe to drink!

Bring back your water sample by noon on Valentines day to have it analyzed for free!

WATER SHOULD BE COLLECTED BETWEEN NOON THURSDAY AND NOON FRIDAY,  
BUT AS CLOSE AS POSSIBLE TO THE DROP OFF TIME. SAMPLE NEEDS TO BE  
RETURNED BY NOON ON FRIDAY. IF YOU HAVE TO COLLECT EARLY, PUT SAMPLE IN  
REFRIGERATOR OR ICE FILLED COOLER UNTIL YOU CAN DROP IT OFF.

Bring Sample before Friday, February 14<sup>th</sup> at Noon to:

**1717 Pleasant Street**

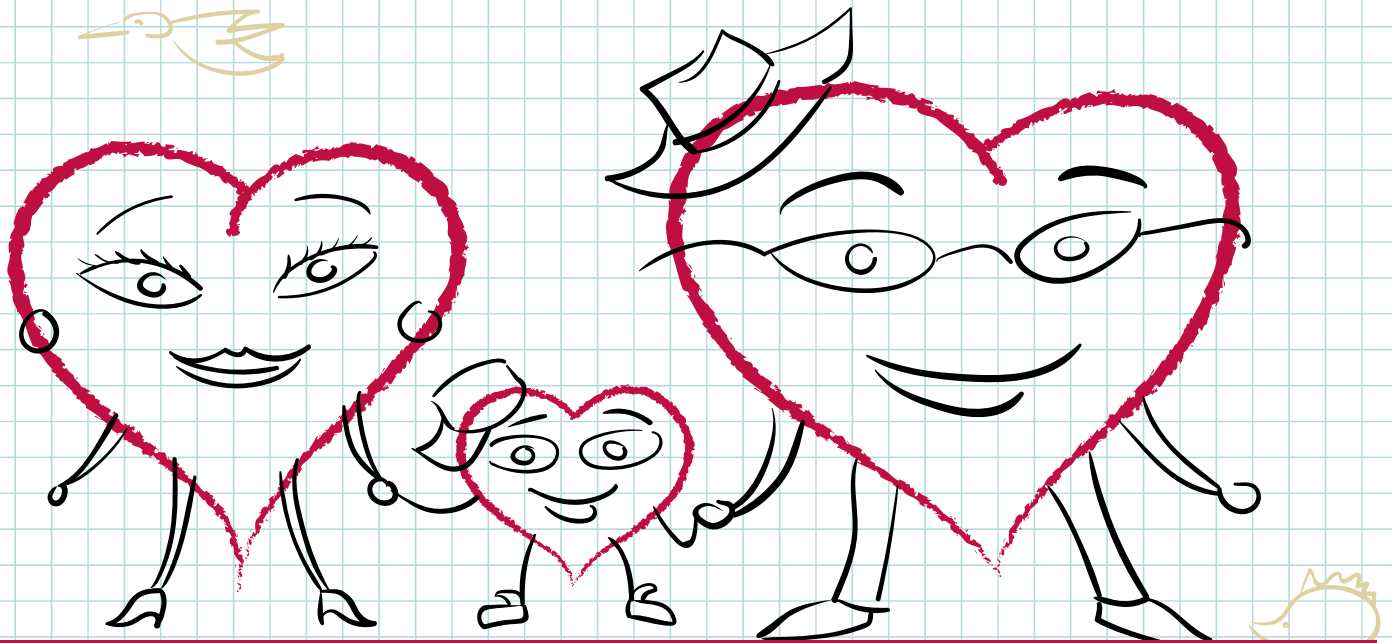
**Suite 100**

**Noblesville, IN 46060**

A cooler will be available for after business hour sample drop-off

### METAL Collection Instructions

You have been directed to collect  First Draw  Second Draw



**First Draw:** Water that has stood **MOTIONLESS** for at least 6 hours (turn off ice maker)

- First, draw samples may be taken in the morning or at the end of the day. The water in the residence must not be used for a 6-hour period prior to taking it.
- Do not flush the water before taking sample.
- Turn on kitchen faucet & immediately fill. Fill to the shoulder of the bottle.

**Second Draw:** If possible, take the sample close to the pump, before the water goes through a treatment system. Sometimes a spigot is located near the pressure tank or alternatively, an outside spigot may be prior to treatment.

- Flush the water 4-5 minutes before collecting the sample, then fill up the container.
- Fill it to the shoulder of the bottle.