



HAMILTON COUNTY
SOIL & WATER
CONSERVATION DISTRICT

Landscape with
NATIVES



Black Eyed Susan plants

HOA

Why **NATIVE?**

Your community entrance way is more than a sign. It's a signal that you are almost home, a welcome sign to friends and guests, a symbol of pride for your community, and hopefully, a reflection of your neighborhood's values. Many communities rotate through seasonal installation of annual plants that provide temporary beauty at high costs (\$10,000+) with no added value to your community's natural environment.

Switching to native plants for your community entrance signs is a lower cost and environmentally friendly win-win for your HOA and our environment. Stop replacing annual plants 3x a year and switch to the hearty, resilient beauty of native perennial plants.

A local HOA was able to save \$10,000 a year by switching to natives instead of annuals in their entryways!

BENEFITS

- Save HOA money
- Support pollinators
- Less labor, less watering, & stop purchasing plant material 3x a year
- Show that your HOA cares about our environment
- Require less (or no) herbicides and pesticides – healthier for your family and pets
- Native plants are an important part of our culture and local heritage

WHAT IS A NATIVE PLANT?

A plant or animal that has evolved in a given place over a period of time sufficient to develop complex and essential relationships with the physical environment and other organisms in a given ecological community.

Native plants are essential because they are the foundation of our ecosystems. They have unique relationships with local wildlife and pollinators and without native plants, those pollinators cannot exist.



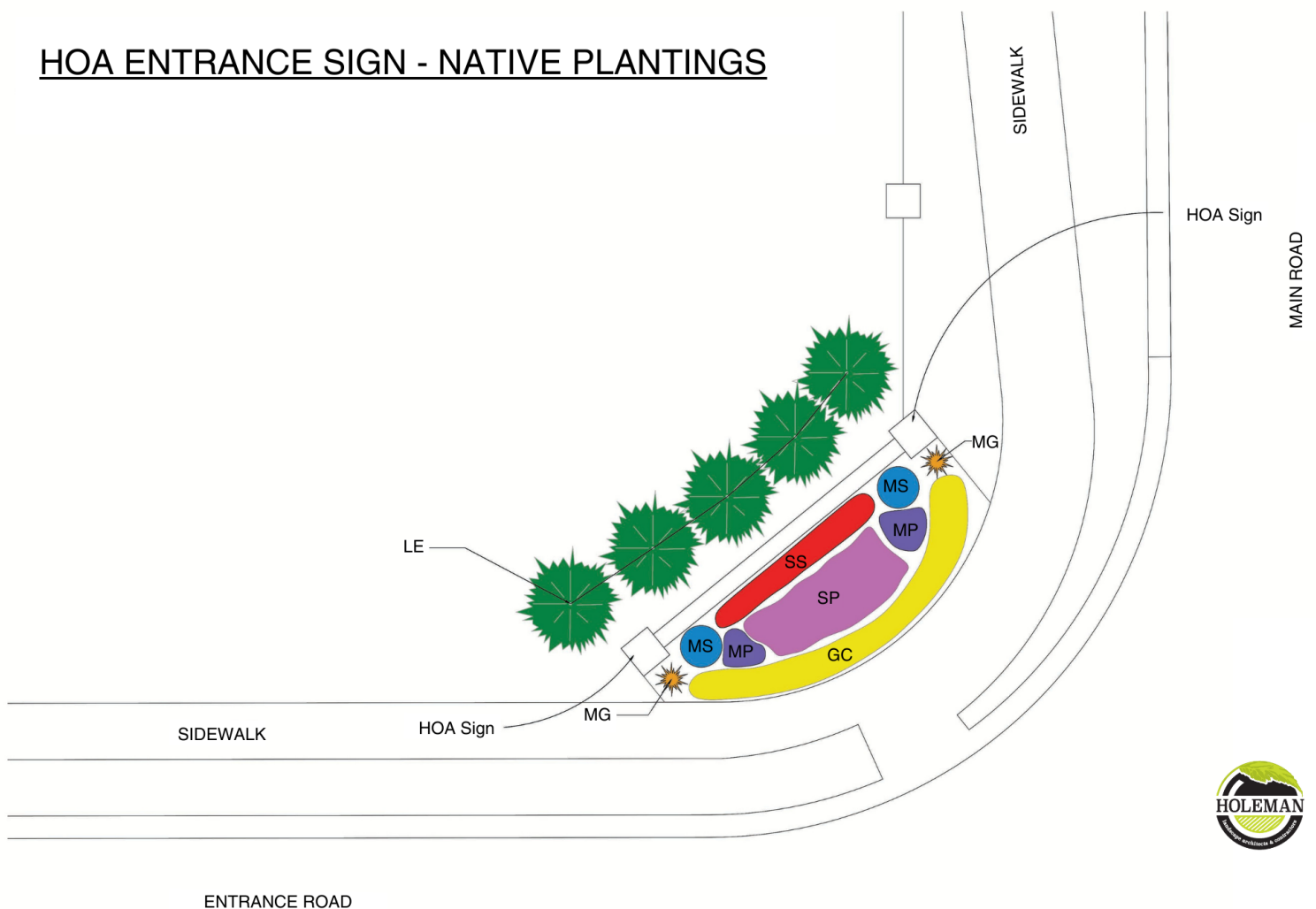
rendering of example plan



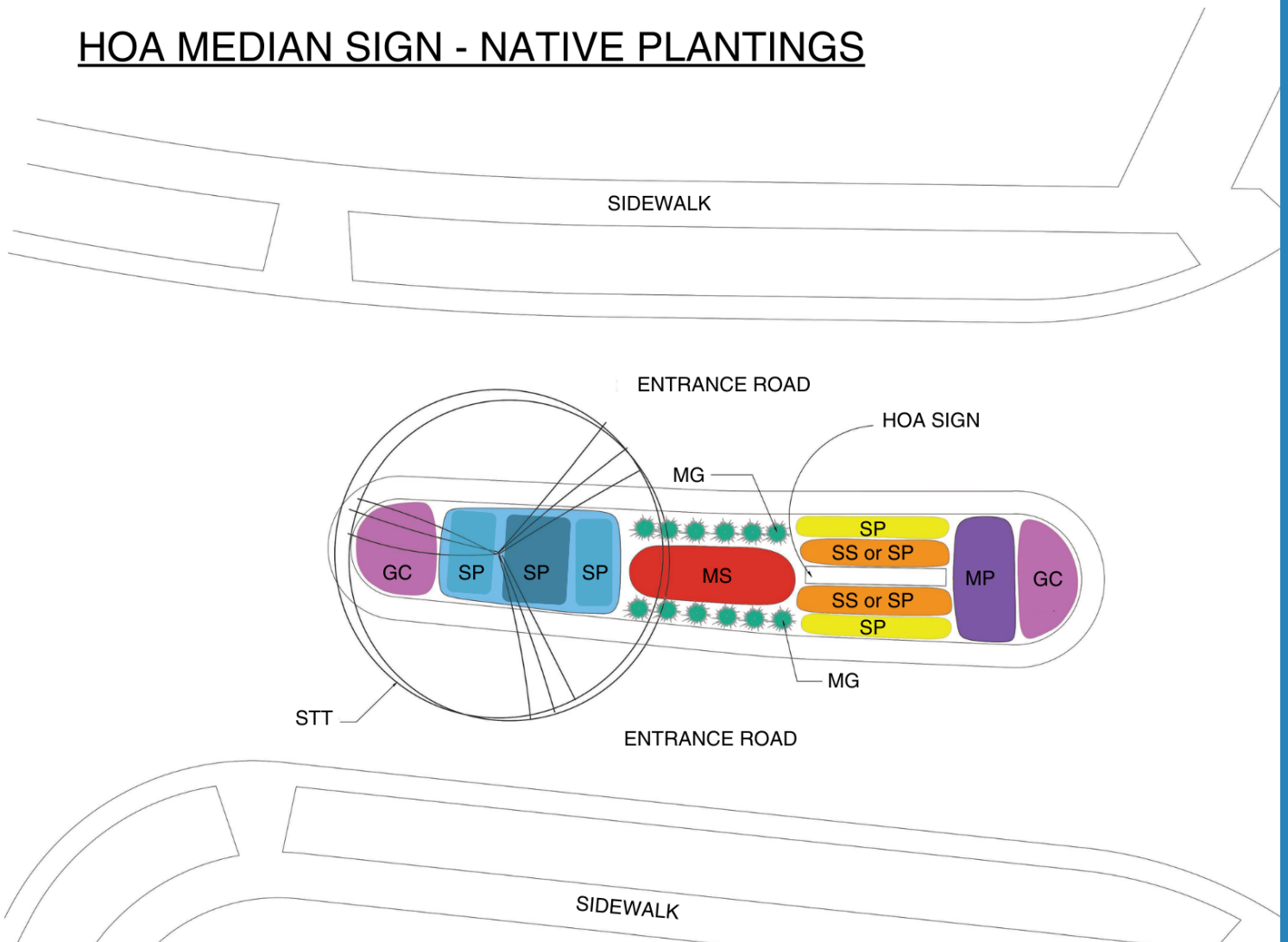
Example PLANTING PLAN

The planting plans and plant lists provided here showcase an example "typical" HOA entrance in Central Indiana with a side landmark sign and a median sign. These plantings can be maintained in a very structured, highly managed way to maintain a formal landscape or allowed to grow into a more natural and diverse planting. Not all landscape companies are familiar with native plants as many work with non-native (even potentially invasive) annuals. Evaluate your vendor's ability to install and maintain your native plants or seek out a company who is invested in your community's long-term success with natives. Your landscape company may also be unfamiliar with sourcing some of the straight species natives. The SWCD is happy to help you identify sources for plants and our Sourcing Native Plants & Seed webpage (hamiltonswcd.org/wheretobuy) is a great place to start.

HOA ENTRANCE SIGN - NATIVE PLANTINGS



HOA MEDIAN SIGN - NATIVE PLANTINGS



CONSIDERATIONS

- The planting plan is carefully structured to preserve visibility of your HOA sign. Consider the height at which lettering starts on your sign. Use this height to help choose plants that will be directly in front of the sign. Plants might need pruned to stay below the text.
- The more dense your planting is, the less weeding will be required over time.
- Choose plants with a variety of bloom times throughout the growing season. This way, something will always be in bloom and pollinators will always have food.
- Change can be hard. Communicate the reasoning and benefits behind this shift to your community.

Take ideas from the provided planting plan and modify for your community. Consider site conditions like soil moisture and sunlight levels. Above and below ground utilities should be incorporated into your plan. Expand or contract the example garden areas to fit your property.

Plant LIST

Planting location	Scientific Name	Common Name	Size	Straight species versus nativar	Sun	Soil	Bloom Color	Bloom Season	Notes	Host plant relationship
Grasses										
LG	<i>Sorghastrum nutans</i>	Indian Grass	5'x2'	Native- straight species	Full sun	Well-drained	Brown	Summer		
LG	<i>Andropogon gerardii</i>	Big Blue Stem	6'x2.5'	Native- straight species	Full sun	Well-drained	Purple	Summer		
LG	<i>Panicum virgatum</i> 'Heavy Metal'	Heavy Metal Switchgrass	5'x2'	Nativar	Full sun	Well-drained	Brown	Summer		
LG	<i>Panicum virgatum</i>	Switch grass	6'x3'	Native- straight species	Full sun	Well-drained	Brown	Summer		
MG	<i>Schizachyrium scoparium</i> 'Standing Ovation'	Standing Ovation Little Bluestem	4'x3'	Nativar	Full sun	Well-drained	Brown	Summer		
MG	<i>Sporobolus heterolepis</i>	Prairie Dropseed	3'x3'	Native- straight species	Full sun	Well-drained	Green	Summer		
MG	<i>Schizachyrium scoparium</i>	Little Bluestem	4'x2'	Native- straight species	Full sun	Well-drained	Brown	Summer		
Groundcover										
GC	<i>Phlox paniculata</i> 'Bambini' 'Cherry Crush'	Cherry Crush	1.25'x1.5'	Nativar	Full sun to part shade	Well-drained	Pink	Summer		
GC	<i>Rudbeckia fulgida</i> var. <i>sullivantii</i> 'Little Goldstar'	Little Goldstar Coneflower	1.25'x1.5'	Nativar	Full sun	Well-drained	Yellow	Summer		
GC*	<i>Schizachyrium scoparium</i>	Little Blue Stem	4'x2'	Native- straight species	Full sun	Well-drained	Brown	Summer		
GC*	<i>Sporobolus heterolepis</i>	Prairie Dropseed	3'x3'	Native- straight species	Full sun	Well-drained	Green	Summer		
GC*	<i>Bouteloua curtipendula</i>	Side Oats Grama	2.5'x2'	Native- straight species	Full sun	Well-drained	Purple	Summer		
GC*	<i>Echinacea pallida</i>	Pale Purple Coneflower	3'x1.5'	Native- straight species	Full sun	Well-drained	Purple	Summer		
GC*	<i>Carex pensylvanica</i>	Pennsylvania Sedge	1'x1'	Native- straight species	Part shade	Moist, Well-drained	Green	Spring		
GC*	<i>Sporobolus heterolepis</i> 'Tara'	Prairie Dropseed 'Tara'	2'x1'	Nativar	Full sun	Well-drained	Green	Summer		
GC*	<i>Carex albicans</i>	White-tinged sedge	1.5'x1.5'	Native- straight species	Full sun to part shade	Moist, Well-drained	Green	Summer		
GC*	<i>Liatris spicata</i> or <i>aspera</i>	Blazing Star	4'x1.5'	Native- straight species	Full sun	Well-drained	Purple	Summer to Fall	Remove mature seed heads before they open to prevent new plants	Host for Blazing Star Borer Moth
GC*	<i>Solidago caesia</i>	Blue Stem Goldenrod	3'x3'	Native- straight species	Full sun to part shade	Moist, Well-drained	Yellow	Summer to Fall		
Ornamental Tree										
OT	<i>Amelanchier x grandiflora</i> 'Autumn Brilliance'	Autumn Brilliance Serviceberry	20'x18'	Nativar	Full sun to part shade	Well-drained	White	Spring		
OT	<i>Amelanchier laevis</i> or <i>Amelanchier arborea</i>	Serviceberry	20'x20'	Native- straight species	Full sun to part shade	Moist, Well-drained	White	Spring		
OT	<i>Cornus florida</i>	Flowering Dogwood	20'x20'	Native- straight species	Full sun to part shade	Well-drained	White, Pink	Spring		Host for Spring Azure Butterfly
OT	<i>Cercis Canadensis</i>	Eastern Redbud	25'x25'	Native- straight species	Full sun to part shade	Moist, Well-drained	Pink	Spring		Host for Henry's Elfin Butterfly
OT	<i>Crataegus crus-galli</i> (thornless form)	Cockspur thornless	25'x30'	Native- straight species	Full sun	Well-drained	White	Spring		Host for Red-spotted Purple Butterfly
OT	<i>Cornus alternifolia</i>	Pagoda dogwood	20'x25'	Native- straight species	Part shade	Moist, Well-drained	White	Spring		Host for Spring Azure Butterfly
Sidewalk Strip										
H1	<i>Rhus aromatica</i> 'Gro-Low'	Grow Low Sumac	3'x8'	Nativar	Full sun to part shade	Well-drained	N/A	N/A	Might require occasional pruning due to spread of plant. Is not appropriate for narrow strips.	Host for Red-banded Hairstreak Butterfly
H1	<i>Aronia melanocarpa</i> 'Low Mound'	Low Mound Black Chokeberry	2'x4'	Nativar	Full sun to part shade	Moist, Well-drained	White	Spring	Might require occasional pruning due to spread of plant. Is not appropriate for narrow strips.	

*Groundcover matrix-selection of grasses and architectural plants or a single species planting of a native grass or sedge as a groundcover.

KEY
 MG - Medium Grass GC - Groundcover H1 - Sidewalk Strip SP - Small Perennial LP - Large Perennial SS - Small Shrub LS - Large Shrub
 LG - Large Grass OT - Ornamental Tree H2 - Sidewalk Strip MP - Medium Perennial SHP - Shade Perennial MS - Medium Shrub

Plant LIST

Planting location	Scientific Name	Common Name	Size	Straight species versus nativar	Sun	Soil	Bloom Color	Bloom Season	Notes	Host plant relationship
Sidewalk Strip continued										
H1	<i>Diervilla x 'SMNDSS'</i>	Kodiak Fresh Honeysuckle	2.5'x2.5'	Nativar	Full sun to part shade	Dry to moderate	Yellow	Spring	This is our native honeysuckle and should not be confused with Japanese honeysuckle which is invasive.	
H2	<i>Sporobolus heterolepis 'Tara'</i>	Prairie Dropseed	2'x1'	Native- straight species	Full sun	Dry to medium	None	Summer		
H2	<i>Schizachyrium scoparium 'The Blues'</i>	The Blues Little Bluestem	3'x2'	Nativar	Full sun	Dry to medium	None	Summer to Fall		
H2	<i>Carex pensylvanica</i>	Pennsylvania Sedge	1'x1.25'	Native- straight species	Full sun to part shade	Moist to wet	None	Spring		
H2	<i>Schizachyrium scoparium</i>	Little Blue Stem	4'x2'	Native- straight species	Full sun	Dry to medium	None	Summer to Fall		
Perennials										
LP	<i>Phlox paniculata</i>	Garden phlox	4'x3'	Native- straight species	Full sun	Well-drained	Various	Summer		
LP	<i>Monarda fistulosa</i>	Wild bergamot/Beebalm	4'x3'	Native- straight species	Full sun	Well-drained	Purple	Summer		
LP	<i>Heliopsis helianthoides</i>	False/Oxeye Sunflower	6'x4'	Native- straight species	Full sun	Well-drained	Yellow	Summer		
LP	<i>Liatris aspera</i>	Rough Blazing Star	3'x1.5x	Native- straight species	Full sun	Well-drained	Purple	Summer to Fall	Remove mature seed heads before they open to prevent new plants	Host for Blazing Star Borer Moth
MP	<i>Amsonia tabernaemontana 'Storm Cloud'</i>	Storm Cloud Blue Star	2'x3'	Nativar	Full sun to part shade	Moist, Well-drained	Blue	Spring	Remove mature seed heads before they open to prevent new plants	Host for Coral Hairstreak Butterfly
MP	<i>Monarda bradburiana</i>	Bradbury's beebalm	2'x2'	Native- straight species	Full sun	Well-drained	Purple	Summer		
MP	<i>Echinacea pallida</i>	Pale purple coneflower	3'x1.5'	Native- straight species	Full sun	Well-drained	Purple	Summer		
MP	<i>Amsonia tabernaemontana</i>	Blue Star	3'x3'	Native- straight species	Full sun to part shade	Moist, Well-drained	Blue	Spring	Remove mature seed heads before they open to prevent new plants	Host plant for the Coral Hairstreak caterpillar
MP	<i>Spigelia marilandica 'Little Redhead'</i>	Red Head Indian Pink	2'x 2'	Nativar	Part shade	Moist, Well-drained	Red	Spring		
MP	<i>Geranium maculatum</i>	Wild geranium	2'x1.5'	Native- straight species	Full sun to part shade	Moist, Well-drained	Pink	Spring		
MP	<i>Spigelia marilandica</i>	Indian Pink	2'x1.5'	Native- straight species	Part shade	Moist, Well-drained	Red	Spring		
MP	<i>Polemonium reptans</i>	Jacob's ladder	1.5'x1.5'	Native- straight species	Part shade	Moist, Well-drained	Blue	Spring		
MP	<i>Liatris spicata 'Kobold'</i>	Kobold Spike Gayfeather	2'x1.25'	Nativar	Full sun	Well-drained	Purple	Summer to Fall		
MP	<i>Phlox paniculata 'Laura'</i>	Laura Garden Phlox	2.5'x1.5'	Nativar	Full sun	Well-drained	Purple	Summer		
MP	<i>Pycnanthemum tenuifolium</i>	Slender Mountain Mint	3'x3'	Native- straight species	Full sun	Well-drained	White	Summer		Host for Gray Hairstreak
MP	<i>Chelone lyonni</i>	Pink Turtlehead	4'x2.5'	Native- straight species	Full sun to part shade	Moist, Well-drained	Pink	Summer to Fall		Host for Baltimore Checkerspot
MP	<i>Packera aurea</i>	Golden ragwort	2.5'x1.5'	Native- straight species	Full sun to part shade	Moist, Well-drained	Yellow	Spring to Summer		
MP	<i>Zizia aurea</i>	Golden alexanders	3'x2'	Native- straight species	Full sun to part shade	Moist, Well-drained	Yellow	Spring to Summer		Host for Black Swallowtail Butterfly
MP	<i>Adiantum pedatum</i>	Maidenhair fern	2.5'x1.5'	Native- straight species	Part shade	Moist, Well-drained	N/A	N/A		
MP	<i>Aster novae-angliae 'Grape Crush'</i>	GRAPE Crush New England Aster	2.5'x4'	Nativar	Full sun	Moist, Well-drained	Purple	Fall		Host for Pearl Crescent Butterfly

KEY

MG - Medium Grass GC - Groundcover H1 - Sidewalk Strip SP - Small Perennial LP - Large Perennial SS - Small Shrub LS - Large Shrub
 LG - Large Grass OT - Ornamental Tree H2 - Sidewalk Strip MP - Medium Perennial SHP - Shade Perennial MS - Medium Shrub

Plant LIST

Planting location	Scientific Name	Common Name	Size	Straight species versus nativar	Sun	Soil	Bloom Color	Bloom Season	Notes	Host plant relationship
Perennials continued										
MP	<i>Symphytotrichum oblongifolium</i>	Aromatic Aster	3'x3'	Native- straight species	Full sun	Well-drained	Purple	Fall		Host for Pearl Crescent Butterfly
MP	<i>Baptisia australis</i>	Blue False Indigo	3'x3'	Native- straight species	Full sun	Well-drained	Blue	Spring	Remove mature seed heads before they open to prevent new plants	Host for Wild Indigo Duskywing
SHP	<i>Aquilegia canadensis</i> 'Little lanterns'	Little Lanterns Columbine	1'x1.25'	Nativar	Full sun to part shade	Well-drained	Red	Spring	Readily self-seeds	
SP	<i>Geranium maculatum</i>	Wild geranium	2'x1.5'	Native- straight species	Full sun to part shade	Moist, Well-drained	Pink	Spring		
SP	<i>Aquilegia canadensis</i>	Columbine	3'x1.5'	Native- straight species	Full sun to part shade	Well-drained	Various	Spring	Readily self-seeds	
SHP	<i>Chelone lyonni</i> 'Armitpp02'	Tiny Tortuga Turtlehead	2'x1.25'	Nativar	Full sun to part shade	Moist, Well-drained	White	Summer to Fall		Host for Baltimore Checkerspot
SHP	<i>Dicentra</i> x 'King of Hearts'	King of Hearts Bleeding Hearts	1'x1.25'	Nativar	Part shade	Moist, Well-drained	Red	Spring to Summer		
SHP	<i>Tiarella</i> x 'Spring Symphony'	Spring Symphony Foam Flower	6"x1.25'	Nativar	Full sun to part shade	Moist, Well-drained	White	Spring		
SHP	<i>Polystichum acrostichoides</i>	Christmas Fern	2'x2'	Native- straight species	Part shade	Moist, Well-drained	N/A	N/A		
SP	<i>Coreopsis</i> Li'l Bang 'Enchanted Eve'	Enchanted Eve Coreopsis	1'x1.5'	Nativar	Full sun	Well-drained	Yellow	Summer		Host for Silvery Checkerspot
SP	<i>Penstemon digitalis</i>	Foxglove Penstemon/Beardtongue	5'x2'	Native- straight species	Full sun	Well-drained	White	Summer	Remove mature seed heads before they open to prevent new plants	
SP	<i>Penstemon hirsutus</i>	Hairy Penstemon/Beardtongue	1.5'x2'	Native- straight species	Full sun	Well-drained	White	Summer	Remove mature seed heads before they open to prevent new plants	
SP	<i>Allium cernuum</i>	Nodding Wild Onion	1.5'x.5'	Native- straight species	Full sun	Well-drained	Pink	Summer		
SP	<i>Coreopsis lanceolata</i>	Lanceleaf coreopsis	2'x1.5'	Native- straight species	Full sun	Well-drained	Yellow	Summer		Host for Silvery Checkerspot
Shrubs										
SS	<i>Aronia melanocarpa</i> 'Ground Hug'	Ground Hug Black Chokeberry	1'x3'	Nativar	Full sun to part shade	Moist, Well-drained	White	Spring		
SS	<i>Diervilla</i> x 'SMNDSS'	Kodiak Fresh Honeysuckle	2.5'x2.5'	Nativar	Full sun to part shade	Dry to moderate	Yellow	Spring	This is our native honeysuckle and should not be confused with Japanese honeysuckle which is invasive.	
SS	<i>Ceanothus americanus</i>	New Jersey Tea	2'x3'	Native- straight species	Full sun to part shade	Dry to moderate	White	Summer	Can be cut back to the ground in early spring to encourage new growth, or it can be left to grow naturally.	Host for Spring Azure and Summer Azure Butterfly
SS	<i>Rhus aromatica</i> 'Gro-Low'	Grow Low Sumac	3'x8'	Nativar	Full sun to part shade	Well-drained	N/A	N/A	Might require occasional pruning due to spread of plant.	Host for Red-banded Hairstreak Butterfly
MS	<i>Thuja occidentalis</i> 'Mr. Bowling Ball'	Bowling Ball Arborvitae	2.5' x 2.5'	Nativar	Full sun to part shade	Moist, Well-drained	None	N/A		
MS	<i>Thuja occidentalis</i> 'Little Giant'	Little Giant Arborvitae	4'x4'	Nativar	Full sun to part shade	Moist, Well-drained	None	N/A		
MS	<i>Diervilla</i> x 'G2X88544'	Kodiak Orange Honeysuckle	4' x 4'	Nativar	Full sun to part shade	Well-drained	Yellow	Summer		
MS	<i>Diervilla lonicera</i>	Northern Bush Honeysuckle	3'x4'	Native- straight species	Full sun to part shade	Moist, Well-drained	Yellow	Summer		

KEY

MG - Medium Grass GC - Groundcover H1 - Sidewalk Strip SP - Small Perennial LP - Large Perennial SS - Small Shrub LS - Large Shrub
 LG - Large Grass OT - Ornamental Tree H2 - Sidewalk Strip MP - Medium Perennial SHP - Shade Perennial MS - Medium Shrub

Plant LIST

Planting location	Scientific Name	Common Name	Size	Straight species versus nativar	Sun	Soil	Bloom Color	Bloom Season	Notes	Host plant relationship
Shrubs continued										
MS	<i>Itea virginica</i> 'Scentlandia'	Scentlandia Sweetspire	3' x 3'	Nativar	Full sun to part shade	Moist, Well-drained	White	Summer		
MS	<i>Itea virginica</i> 'Sprich' 'Little Henry'	Virginia Sweetspire "Little Henry"	2x2.5'	Nativar	Full sun to part shade	Moist, Well-drained	White	Summer		
MS	<i>Rhus aromatica</i> 'Gro-Low'	Fragrant Sumac 'Gro-Low'	2'x7'	Nativar	Full sun to part shade	Well-drained	N/A	N/A		Host for Red-banded Hairstreak Butterfly
MS	<i>Juniperus virginiana</i> 'Grey Owl'	Grey Owl Red Cedar	3'x5'	Nativar	Full sun	Well-drained	None	N/A	Plant requires a male pollinator to produce red berries.	
MS	<i>Symphoricarpos</i> x 'Sophie'	Proud berry Coralberry	3'x3'	Nativar	Full sun to part shade	Moist, Well-drained	Pink	Summer		
MS	<i>Symphoricarpos orbiculatus</i>	Coralberry	5'x8'	Native-straight species	Full sun to part shade	Moist, Well-drained	Pink	Summer		
MS	<i>Cephalanthus occidentalis</i> 'SMCOSS'	Sugar Shack Button Bush	4'x4'	Nativar	Full sun to part shade	Moist, Well-drained	White	Summer		Host for Hydrangea Sphinx Moth
MS	<i>Ilex verticillata</i> 'Nana'	Red Sprite Winterberry	3'x3'	Nativar	Full sun to part shade	Moist, Well-drained	N/A	N/A	Plant requires a male pollinator to produce red berries. Requires acidic soil.	
LS	<i>Calycanthus</i> x 'Aphrodite'	Aphrodite Sweetshrub	5'x5'	Nativar	Full sun to part shade	Moist, Well-drained	Red	Spring to Summer		
LS	<i>Aronia melanocarpa</i> 'Lowscape Snowfire'	Snowfire Black Chokeberry	4'x4'	Nativar	Full sun to part shade	Moist, Well-drained	White	Spring		
LS	<i>Viburnum dentatum</i> 'Blue Muffin'	Blue Muffin Viburnum	5'x4'	Nativar	Full sun to part shade	Moist, Well-drained	White	Summer	Plant requires a different cultivar of <i>Viburnum dentatum</i> (Arrowwood) to produce berries	Host for Spring Azure Butterfly
LS	<i>Viburnum dentatum</i>	Arrowwood Viburnum	8'x8'	Native- straight species	Full sun to part shade	Moist, Well-drained	White	Spring to Summer	Plant requires a different cultivar of <i>Viburnum dentatum</i> (Arrowwood) to produce berries	Host for Blue Azure Butterfly
LS	<i>Viburnum acerifolium</i>	Maple leaf Viburnum	2'-6'	Native-straight species	Part shade	Moist, Well-drained	White	Summer		Host for Spring Azure Butterfly
LS	<i>Hypericum prolificum</i>	Shrubby St. Johns Wort	2'-3'x 2'-3'	Native- straight species	Full sun to part shade	Well-drained	Yellow	Summer		
LS	<i>Physocarpus opulifolius</i> 'Seward'	Summer Wine Ninebark	5'x5'	Nativar	Full sun to part shade	Well-drained	Pink	Spring	Less likely to sucker. Erosion control. Resistance to powdery mildew.	
LS	<i>Physocarpus opulifolius</i>	Ninebark	8'x6'	Native- straight species	Full sun to part shade	Well-drained	White	Spring		
LS	<i>Ilex verticillata</i> 'Jim Dandy'	Jim Dandy Winterberry	5'x6'	Nativar	Full sun to part shade	Moist, Well-drained	N/A	N/A	Non fruiting- male plant.	
LS	<i>Cornus racemosa</i>	Gray dogwood	3'x8'	Native- straight species	Full sun to part shade	Moist, Well-drained	White	Spring	Will spread to form thickets if root suckers are not removed.	
LS	<i>Rhus copallinum</i>	Winged sumac	12'x15'	Native-straight species	Full sun	Well-drained	Greenish-Yellow	Summer	Plant requires a male pollinator to produce red berries. Ornamental features but possibly weedy for foundation planting.	Host for Red-banded Hairstreak Butterfly
LS	<i>Hydrangea arborescens</i> 'Annabelle'	Anabelle Hydrangea	5'-5'	Nativar	Full sun to part shade	Moist, Well-drained	White	Summer		
LS	<i>Hydrangea arborescens</i>	Smooth Hydragea	5'x5'	Native-straight species	Full sun to part shade	Moist, Well-drained	White	Summer		

KEY

MG - Medium Grass GC - Groundcover H1 - Sidewalk Strip SP - Small Perennial LP - Large Perennial SS - Small Shrub LS - Large Shrub
 LG - Large Grass OT - Ornamental Tree H2 - Sidewalk Strip MP - Medium Perennial SHP - Shade Perennial MS - Medium Shrub