

HAMILTON COUNTY
Soil & Water



CONSERVATION DISTRICT

Landscape
with
NATIVES

RESIDENTIAL



Purple Coneflower

Why **NATIVE?**

In a world where it can feel tough to make an impact, you have the opportunity to change your community right outside your front door! Our home landscapes have become centered upon turf grass and non-native, sometimes invasive plants that provide very little in terms of pollinator food and shelter, clean water, erosion control, water absorption, and more. The good news is, we can make a difference by being stewards of the land around our home and setting an example for our neighbors and communities.

BENEFITS OF NATIVES IN THE HOME LANDSCAPE

- Require less (or no) herbicides and pesticides— healthier for your family and pets.
- Reduce runoff from your property! The deep roots of natives increase stormwater absorption and allow the soil to filter the water.
- Require less water/irrigation.
- Native plants are colorful, unique, diverse & beautiful!
- Native plants are an important part of our culture and local heritage.

WHAT IS A NATIVE PLANT?

A plant or animal that has evolved in a given place over a period of time sufficient to develop complex and essential relationships with the physical environment and other organisms in a given ecological community.

Native plants are essential because they are the foundation of our ecosystems. They have unique relationships with local wildlife and pollinators and without native plants, those pollinators cannot exist.

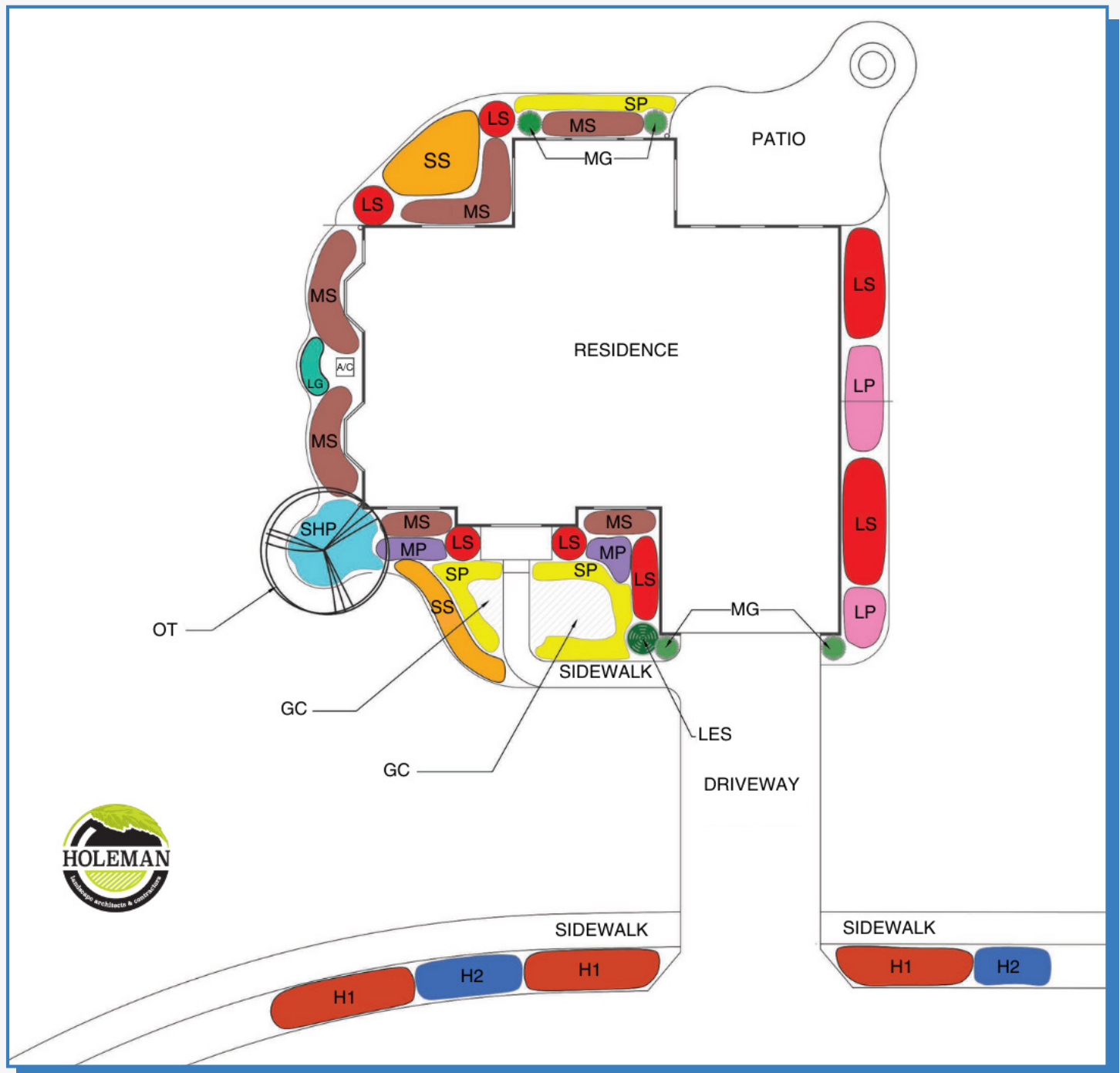


rendering of example plan

Example PLANTING PLAN

The planting plan and plant list provided here showcases an example “typical” residential property in Central Indiana. While this landscape plan is for the entire property home landscape, don't feel like native landscaping is all or nothing. Choose one area of your property or one landscape bed and start there.

Integrate more natives as time goes on. These plantings can be maintained in a very structured, highly managed way to maintain a formal landscape or allowed to grow into a more natural and diverse planting.





LANDSCAPE DESIGN PRINCIPLES

- Curved garden edges are easier to maintain and natural looking.
- Plant a cluster of the same plant together. It is more visually appealing and helps pollinators find the plants.
- Generally, taller plants should go in the back of the landscape bed along the house or fence with medium and shorter plants in the front.
- Layer varying heights of plants to create a “green mulch” that covers the soil. This will reduce or eliminate the need for wood mulch over time and help reduce weed pressure.
- Choose plants with a variety of bloom times throughout the growing season. This way, something will always be in bloom and pollinators will always have food.
- Consider areas that are highly visible from inside your home or from the street as focal points to feature.
- Make sure plants growing under windows are low enough to not block the windows.
- Include elements of care that show that your landscape area is maintained and serves a purpose. Signage, birdhouses, mowed or defined garden edges, and plant ID markers are great ideas. **You can get your garden certified through the Indiana Native Plant Society by visiting growindiananatives.org.**

Take ideas from the provided planting plan and modify for your yard. Consider site conditions like soil moisture and sunlight levels. Above and below ground utilities should be incorporated into your plan. Expand or contract the example garden areas to fit your property. Because not every house is oriented in the same direction, suggestions include plants for sunny locations and shaded locations. You should pick plants that do well in shade for the north side of your house.

Plant LIST

Planting location	Scientific Name	Common Name	Size	Straight species versus nativar	Sun	Soil	Bloom Color	Bloom Season	Notes	Host plant relationship
Grasses										
LG	<i>Sorghastrum nutans</i>	Indian Grass	5'x2'	Native- straight species	Full sun	Well-drained	Brown	Summer		
LG	<i>Andropogon gerardii</i>	Big Blue Stem	6'x2.5'	Native- straight species	Full sun	Well-drained	Purple	Summer		
LG	<i>Panicum virgatum</i> 'Heavy Metal'	Heavy Metal Switchgrass	5'x2'	Nativar	Full sun	Well-drained	Brown	Summer		
LG	<i>Panicum virgatum</i>	Switch grass	6'x3'	Native- straight species	Full sun	Well-drained	Brown	Summer		
MG	<i>Schizachyrium scoparium</i> 'Standing Ovation'	Standing Ovation Little Bluestem	4'x3'	Nativar	Full sun	Well-drained	Brown	Summer		
MG	<i>Sporobolus heterolepis</i>	Prairie Dropseed	3'x3'	Native- straight species	Full sun	Well-drained	Green	Summer		
MG	<i>Schizachyrium scoparium</i>	Little Bluestem	4'x2'	Native- straight species	Full sun	Well-drained	Brown	Summer		
Groundcover										
GC	<i>Phlox paniculata</i> Bambini 'Cherry Crush'	Cherry Crush	1.25'x1.5'	Nativar	Full sun to part shade	Well-drained	Pink	Summer		
GC	<i>Rudbeckia fulgida</i> var. <i>sullivantii</i> 'Little Goldstar'	Little Goldstar Coneflower	1.25'x1.5'	Nativar	Full sun	Well-drained	Yellow	Summer		
GC*	<i>Schizachyrium scoparium</i>	Little Blue Stem	4'x2'	Native- straight species	Full sun	Well-drained	Brown	Summer		
GC*	<i>Sporobolus heterolepis</i>	Prairie Dropseed	3'x3'	Native- straight species	Full sun	Well-drained	Green	Summer		
GC*	<i>Bouteloua curtipendula</i>	Side Oats Grama	2.5'x2'	Native- straight species	Full sun	Well-drained	Purple	Summer		
GC*	<i>Echinacea pallida</i>	Pale Purple Coneflower	3'x1.5'	Native- straight species	Full sun	Well-drained	Purple	Summer		
GC*	<i>Carex pensylvanica</i>	Pennsylvania Sedge	1'x1'	Native- straight species	Part shade	Moist, Well-drained	Green	Spring		
GC*	<i>Sporobolus heterolepis</i> 'Tara'	Prairie Dropseed 'Tara'	2'x1'	Nativar	Full sun	Well-drained	Green	Summer		
GC*	<i>Carex albicans</i>	White-tinged sedge	1.5'x1.5'	Native- straight species	Full sun to part shade	Moist, Well-drained	Green	Summer		
GC*	<i>Liatris spicata</i> or <i>aspera</i>	Blazing Star	4'x1.5'	Native- straight species	Full sun	Well-drained	Purple	Summer to Fall	Remove mature seed heads before they open to prevent new plants	Host for Blazing Star Borer Moth
GC*	<i>Solidago caesia</i>	Blue Stem Goldenrod	3'x3'	Native- straight species	Full sun to part shade	Moist, Well-drained	Yellow	Summer to Fall		
Ornamental Tree										
OT	<i>Amelanchier x grandiflora</i> 'Autumn Brilliance'	Autumn Brilliance Serviceberry	20'x18'	Nativar	Full sun to part shade	Well-drained	White	Spring		
OT	<i>Amelanchier laevis</i> or <i>Amelanchier arborea</i>	Serviceberry	20'x20'	Native- straight species	Full sun to part shade	Moist, Well-drained	White	Spring		
OT	<i>Cornus florida</i>	Flowering Dogwood	20'x20'	Native- straight species	Full sun to part shade	Well-drained	White, Pink	Spring		Host for Spring Azure Butterfly
OT	<i>Cercis Canadensis</i>	Eastern Redbud	25'x25'	Native- straight species	Full sun to part shade	Moist, Well-drained	Pink	Spring		Host for Henry's Elfin Butterfly
OT	<i>Crataegus crus-galli</i> (thornless form)	Cockspur thornless	25'x30'	Native- straight species	Full sun	Well-drained	White	Spring		Host for Red-spotted Purple Butterfly
OT	<i>Cornus alternifolia</i>	Pagoda dogwood	20'x25'	Native- straight species	Part shade	Moist, Well-drained	White	Spring		Host for Spring Azure Butterfly
Sidewalk Strip										
H1	<i>Rhus aromatica</i> 'Gro-Low'	Grow Low Sumac	3'x8'	Nativar	Full sun to part shade	Well-drained	N/A	N/A	Might require occasional pruning due to spread of plant. Is not appropriate for narrow strips.	Host for Red-banded Hairstreak Butterfly
H1	<i>Aronia melanocarpa</i> 'Low Scape Mound'	Low Mound Black Chokeberry	2'x4'	Nativar	Full sun to part shade	Moist, Well-drained	White	Spring	Might require occasional pruning due to spread of plant. Is not appropriate for narrow strips.	

*Groundcover matrix-selection of grasses and architectural plants or a single species planting of a native grass or sedge as a groundcover.

KEY

MG - Medium Grass GC - Groundcover H1 - Sidewalk Strip SP - Small Perennial LP - Large Perennial SS - Small Shrub LS - Large Shrub
 LG - Large Grass OT - Ornamental Tree H2 - Sidewalk Strip MP - Medium Perennial SHP - Shade Perennial MS - Medium Shrub

Plant LIST

Planting location	Scientific Name	Common Name	Size	Straight species versus nativar	Sun	Soil	Bloom Color	Bloom Season	Notes	Host plant relationship
Sidewalk Strip continued										
H1	<i>Diervilla x 'SMNDSS'</i>	Kodiak Fresh Honeysuckle	2.5'x2.5'	Nativar	Full sun to part shade	Dry to moderate	Yellow	Spring	This is our native honeysuckle and should not be confused with Japanese honeysuckle which is invasive.	
H2	<i>Sporobolus heterolepis 'Tara'</i>	Prairie Dropseed	2'x1'	Native- straight species	Full sun	Dry to medium	None	Summer		
H2	<i>Schizachyrium scoparium 'The Blues'</i>	The Blues Little Bluestem	3'x2'	Nativar	Full sun	Dry to medium	None	Summer to Fall		
H2	<i>Carex pensylvanica</i>	Pennsylvania Sedge	1'x1.25'	Native- straight species	Full sun to part shade	Moist to wet	None	Spring		
H2	<i>Schizachyrium scoparium</i>	Little Blue Stem	4'x2'	Native- straight species	Full sun	Dry to medium	None	Summer to Fall		
Perennials										
LP	<i>Phlox paniculata</i>	Garden phlox	4'x3'	Native- straight species	Full sun	Well-drained	Various	Summer		
LP	<i>Monarda fistulosa</i>	Wild bergamot/Beebalm	4'x3'	Native- straight species	Full sun	Well-drained	Purple	Summer		
LP	<i>Heliopsis helianthoides</i>	False/Oxeye Sunflower	6'x4'	Native- straight species	Full sun	Well-drained	Yellow	Summer		
LP	<i>Liatris aspera</i>	Rough Blazing Star	3'x1.5x	Native- straight species	Full sun	Well-drained	Purple	Summer to Fall	Remove mature seed heads before they open to prevent new plants	Host for Blazing Star Borer Moth
MP	<i>Amsonia tabernaemontana 'Storm Cloud'</i>	Storm Cloud Blue Star	2'x3'	Nativar	Full sun to part shade	Moist, Well-drained	Blue	Spring	Remove mature seed heads before they open to prevent new plants	Host for Coral Hairstreak Butterfly
MP	<i>Monarda bradburiana</i>	Bradbury's beebalm	2'x2'	Native- straight species	Full sun	Well-drained	Purple	Summer		
MP	<i>Echinacea pallida</i>	Pale purple coneflower	3'x1.5'	Native- straight species	Full sun	Well-drained	Purple	Summer		
MP	<i>Amsonia tabernaemontana</i>	Blue Star	3'x3'	Native- straight species	Full sun to part shade	Moist, Well-drained	Blue	Spring	Remove mature seed heads before they open to prevent new plants	Host plant for the Coral Hairstreak caterpillar
MP	<i>Spigelia marilandica 'Little Redhead'</i>	Red Head Indian Pink	2'x 2'	Nativar	Part shade	Moist, Well-drained	Red	Spring		
MP	<i>Geranium maculatum</i>	Wild geranium	2'x1.5'	Native- straight species	Full sun to part shade	Moist, Well-drained	Pink	Spring		
MP	<i>Spigelia marilandica</i>	Indian Pink	2'x1.5'	Native- straight species	Part shade	Moist, Well-drained	Red	Spring		
MP	<i>Polemonium reptans</i>	Jacob's ladder	1.5'x1.5'	Native- straight species	Part shade	Moist, Well-drained	Blue	Spring		
MP	<i>Liatris spicata 'Kobold'</i>	Kobold Spike Gayfeather	2'x1.25'	Nativar	Full sun	Well-drained	Purple	Summer to Fall		
MP	<i>Phlox paniculata 'Laura'</i>	Laura Garden Phlox	2.5'x1.5'	Nativar	Full sun	Well-drained	Purple	Summer		
MP	<i>Pycnanthemum tenuifolium</i>	Slender Mountain Mint	3'x3'	Native- straight species	Full sun	Well-drained	White	Summer		Host for Gray Hairstreak
MP	<i>Chelone lyonni</i>	Pink Turtlehead	4'x2.5'	Native- straight species	Full sun to part shade	Moist, Well-drained	Pink	Summer to Fall		Host for Baltimore Checkerspot
MP	<i>Packera aurea</i>	Golden ragwort	2.5'x1.5'	Native- straight species	Full sun to part shade	Moist, Well-drained	Yellow	Spring to Summer		
MP	<i>Zizia aurea</i>	Golden alexanders	3'x2'	Native- straight species	Full sun to part shade	Moist, Well-drained	Yellow	Spring to Summer		Host for Black Swallowtail Butterfly
MP	<i>Adiantum pedatum</i>	Maidenhair fern	2.5'x1.5'	Native- straight species	Part shade	Moist, Well-drained	N/A	N/A		
MP	<i>Aster novae-angliae 'Grape Crush'</i>	GRAPE Crush New England Aster	2.5'x4'	Nativar	Full sun	Moist, Well-drained	Purple	Fall		Host for Pearl Crescent Butterfly

KEY

MG - Medium Grass GC - Groundcover H1 - Sidewalk Strip SP - Small Perennial LP - Large Perennial SS - Small Shrub LS - Large Shrub
 LG - Large Grass OT - Ornamental Tree H2 - Sidewalk Strip MP - Medium Perennial SHP - Shade Perennial MS - Medium Shrub

Plant LIST

Planting location	Scientific Name	Common Name	Size	Straight species versus nativar	Sun	Soil	Bloom Color	Bloom Season	Notes	Host plant relationship
Perennials continued										
MP	<i>Symphytotrichum oblongifolium</i>	Aromatic Aster	3'x3'	Native- straight species	Full sun	Well-drained	Purple	Fall		Host for Pearl Crescent Butterfly
MP	<i>Baptisia australis</i>	Blue False Indigo	3'x3'	Native- straight species	Full sun	Well-drained	Blue	Spring	Remove mature seed heads before they open to prevent new plants	Host for Wild Indigo Duskywing
SHP	<i>Aquilegia canadensis</i> 'Little lanterns'	Little Lanterns Columbine	1'x1.25'	Nativar	Full sun to part shade	Well-drained	Red	Spring	Readily self-seeds	
SP	<i>Geranium maculatum</i>	Wild geranium	2'x1.5'	Native- straight species	Full sun to part shade	Moist, Well-drained	Pink	Spring		
SP	<i>Aquilegia canadensis</i>	Columbine	3'x1.5'	Native- straight species	Full sun to part shade	Well-drained	Various	Spring	Readily self-seeds	
SHP	<i>Chelone lyonni</i> 'Armitpp02'	Tiny Tortuga Turtlehead	2'x1.25'	Nativar	Full sun to part shade	Moist, Well-drained	White	Summer to Fall		Host for Baltimore Checkerspot
SHP	<i>Dicentra x</i> 'King of Hearts'	King of Hearts Bleeding Hearts	1'x1.25'	Nativar	Part shade	Moist, Well-drained	Red	Spring to Summer		
SHP	<i>Tiarella x</i> 'Spring Symphony'	Spring Symphony Foam Flower	6"x1.25'	Nativar	Full sun to part shade	Moist, Well-drained	White	Spring		
SHP	<i>Polystichum acrostichoides</i>	Christmas Fern	2'x2'	Native- straight species	Part shade	Moist, Well-drained	N/A	N/A		
SP	<i>Coreopsis Li'l Bang</i> 'Enchanted Eve'	Enchanted Eve Coreopsis	1'x1.5'	Nativar	Full sun	Well-drained	Yellow	Summer		Host for Silvery Checkerspot
SP	<i>Penstemon digitalis</i>	Foxglove Penstemon/Beardtongue	5'x2'	Native- straight species	Full sun	Well-drained	White	Summer	Remove mature seed heads before they open to prevent new plants	
SP	<i>Penstemon hirsutus</i>	Hairy Penstemon/Beardtongue	1.5'x2'	Native- straight species	Full sun	Well-drained	White	Summer	Remove mature seed heads before they open to prevent new plants	
SP	<i>Allium cernuum</i>	Nodding Wild Onion	1.5'x.5'	Native- straight species	Full sun	Well-drained	Pink	Summer		
SP	<i>Coreopsis lanceolata</i>	Lanceleaf coreopsis	2'x1.5'	Native- straight species	Full sun	Well-drained	Yellow	Summer		Host for Silvery Checkerspot
Shrubs										
SS	<i>Aronia melanocarpa</i> 'Ground Hug'	Ground Hug Black Chokeberry	1'x3'	Nativar	Full sun to part shade	Moist, Well-drained	White	Spring		
SS	<i>Diervilla x</i> 'SMNDSS'	Kodiak Fresh Honeysuckle	2.5'x2.5'	Nativar	Full sun to part shade	Dry to moderate	Yellow	Spring	This is our native honeysuckle and should not be confused with Japanese honeysuckle which is invasive.	
SS	<i>Ceanothus americanus</i>	New Jersey Tea	2'x3'	Native- straight species	Full sun to part shade	Dry to moderate	White	Summer	Can be cut back to the ground in early spring to encourage new growth, or it can be left to grow naturally.	Host for Spring Azure and Summer Azure Butterfly
SS	<i>Rhus aromatica</i> 'Gro-Low'	Grow Low Sumac	3'x8'	Nativar	Full sun to part shade	Well-drained	N/A	N/A	Might require occasional pruning due to spread of plant.	Host for Red-banded Hairstreak Butterfly
MS	<i>Thuja occidentalis</i> 'Mr. Bowling Ball'	Bowling Ball Arborvitae	2.5' x 2.5'	Nativar	Full sun to part shade	Moist, Well-drained	None	N/A		
MS	<i>Thuja occidentalis</i> 'Little Giant'	Little Giant Arborvitae	4'x4'	Nativar	Full sun to part shade	Moist, Well-drained	None	N/A		
MS	<i>Diervilla x</i> 'G2X88544'	Kodiak Orange Honeysuckle	4' x 4'	Nativar	Full sun to part shade	Well-drained	Yellow	Summer		
MS	<i>Diervilla lonicera</i>	Northern Bush Honeysuckle	3'x4'	Native- straight species	Full sun to part shade	Moist, Well-drained	Yellow	Summer		

KEY

MG - Medium Grass GC - Groundcover H1 - Sidewalk Strip SP - Small Perennial LP - Large Perennial SS - Small Shrub LS - Large Shrub
 LG - Large Grass OT - Ornamental Tree H2 - Sidewalk Strip MP - Medium Perennial SHP - Shade Perennial MS - Medium Shrub

Plant LIST

Planting location	Scientific Name	Common Name	Size	Straight species versus nativar	Sun	Soil	Bloom Color	Bloom Season	Notes	Host plant relationship
Shrubs continued										
MS	<i>Itea virginica</i> 'Scentlandia'	Scentlandia Sweetspire	3' x 3'	Nativar	Full sun to part shade	Moist, Well-drained	White	Summer		
MS	<i>Itea virginica</i> 'Sprich' 'Little Henry'	Virginia Sweetspire "Little Henry"	2'x2.5'	Nativar	Full sun to part shade	Moist, Well-drained	White	Summer		
MS	<i>Rhus aromatica</i> 'Gro-Low'	Fragrant Sumac 'Gro-Low'	2'x7'	Nativar	Full sun to part shade	Well-drained	N/A	N/A		Host for Red-banded Hairstreak Butterfly
MS	<i>Juniperus virginiana</i> 'Grey Owl'	Grey Owl Red Cedar	3'x5'	Nativar	Full sun	Well-drained	None	N/A	Plant requires a male pollinator to produce red berries.	
MS	<i>Symphoricarpos</i> x 'Sophie'	Proud berry Coralberry	3'x3'	Nativar	Full sun to part shade	Moist, Well-drained	Pink	Summer		
MS	<i>Symphoricarpos orbiculatus</i>	Coralberry	5'x8'	Native-straight species	Full sun to part shade	Moist, Well-drained	Pink	Summer		
MS	<i>Cephalanthus occidentalis</i> 'SMCOSS'	Sugar Shack Button Bush	4'x4'	Nativar	Full sun to part shade	Moist, Well-drained	White	Summer		Host for Hydrangea Sphinx Moth
MS	<i>Ilex verticillata</i> 'Nana'	Red Sprite Winterberry	3'x3'	Nativar	Full sun to part shade	Moist, Well-drained	N/A	N/A	Plant requires a male pollinator to produce red berries. Requires acidic soil.	
LS	<i>Calycanthus</i> x 'Aphrodite'	Aphrodite Sweetshrub	5'x5'	Nativar	Full sun to part shade	Moist, Well-drained	Red	Spring to Summer		
LS	<i>Aronia melanocarpa</i> 'Lowscape Snowfire'	Snowfire Black Chokeberry	4'x4'	Nativar	Full sun to part shade	Moist, Well-drained	White	Spring		
LS	<i>Viburnum dentatum</i> 'Blue Muffin'	Blue Muffin Viburnum	5'x4'	Nativar	Full sun to part shade	Moist, Well-drained	White	Summer	Plant requires a different cultivar of <i>Viburnum dentatum</i> (Arrowwood) to produce berries	Host for Spring Azure Butterfly
LS	<i>Viburnum dentatum</i>	Arrowwood Viburnum	8'x8'	Native- straight species	Full sun to part shade	Moist, Well-drained	White	Spring to Summer	Plant requires a different cultivar of <i>Viburnum dentatum</i> (Arrowwood) to produce berries	Host for Blue Azure Butterfly
LS	<i>Viburnum acerifolium</i>	Maple leaf Viburnum	2'-6'	Native-straight species	Part shade	Moist, Well-drained	White	Summer		Host for Spring Azure Butterfly
LS	<i>Hypericum prolificum</i>	Shrubby St. Johns Wort	2'-3'x 2'-3'	Native- straight species	Full sun to part shade	Well-drained	Yellow	Summer		
LS	<i>Physocarpus opulifolius</i> 'Seward'	Summer Wine Ninebark	5'x5'	Nativar	Full sun to part shade	Well-drained	Pink	Spring	Less likely to sucker. Erosion control. Resistance to powdery mildew.	
LS	<i>Physocarpus opulifolius</i>	Ninebark	8'x6'	Native- straight species	Full sun to part shade	Well-drained	White	Spring		
LS	<i>Ilex verticillata</i> 'Jim Dandy'	Jim Dandy Winterberry	5'X6'	Nativar	Full sun to part shade	Moist, Well-drained	N/A	N/A	Non fruiting- male plant.	
LS	<i>Cornus racemosa</i>	Gray dogwood	3'x8'	Native- straight species	Full sun to part shade	Moist, Well-drained	White	Spring	Will spread to form thickets if root suckers are not removed.	
LS	<i>Rhus copallinum</i>	Winged sumac	12'x15'	Native-straight species	Full sun	Well-drained	Greenish-Yellow	Summer	Plant requires a male pollinator to produce red berries. Ornamental features but possibly weedy for foundation planting.	Host for Red-banded Hairstreak Butterfly
LS	<i>Hydrangea arborescens</i> 'Annabelle'	Anabelle Hydrangea	5'-5'	Nativar	Full sun to part shade	Moist, Well-drained	White	Summer		
LS	<i>Hydrangea arborescens</i>	Smooth Hydragea	5'x5'	Native-straight species	Full sun to part shade	Moist, Well-drained	White	Summer		

KEY

MG - Medium Grass GC - Groundcover H1 - Sidewalk Strip SP - Small Perennial LP - Large Perennial SS - Small Shrub LS - Large Shrub
 LG - Large Grass OT - Ornamental Tree H2 - Sidewalk Strip MP - Medium Perennial SHP - Shade Perennial MS - Medium Shrub